

DETAILS
— BE —
BATH TUBS





HERE ON WE TAKE CARE OF
THE DETAILS, SO YOU CAN
JUST BE

DETAILS
— BE —

DETAILS B.E. is a brand born from FCML's **legacy of passion**. It represents our relentless pursuit for customer satisfaction. All the experiences we have gathered in the last **23 years**, from serving over **5 million customers**, have been poured into the creation of brand **DETAILS B.E.**

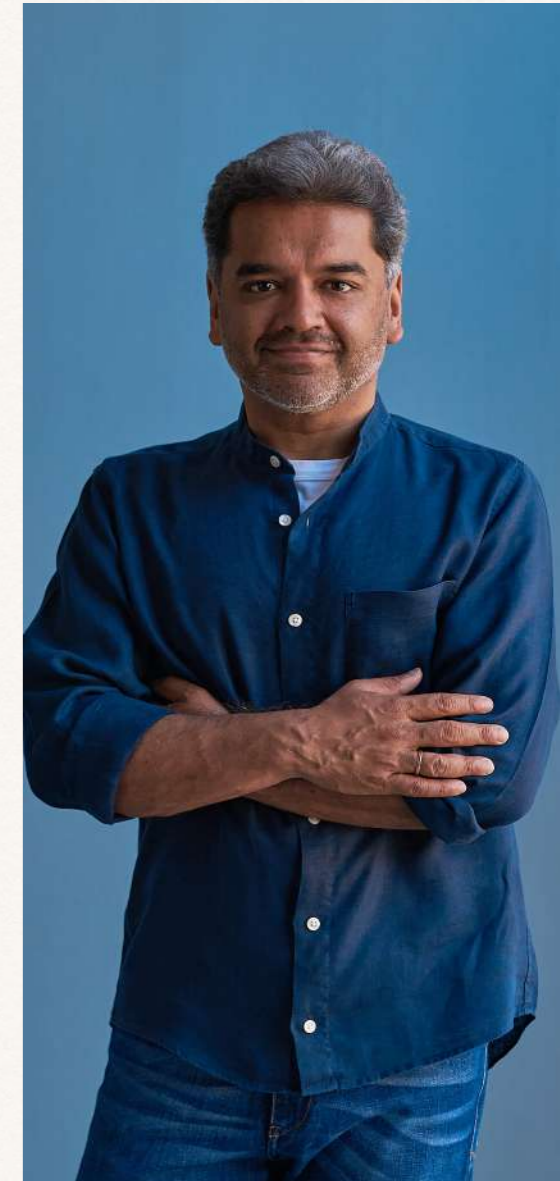
DETAILS B.E. products are **globally designed, produced and sourced**. They spell **accessible luxury**—bridging the gap between **high-end and mass-market brands**. By filling this gaping hole in our marketplace, **DETAILS B.E.** is FCML's commitment to our community that we will always take care of their needs first.

DETAILS B.E. adheres to the **FCML promise of quality, aesthetics and service**. You can count on our signature **innovativeness** to be reflected in each product in the collection. Here you will find great attention to **design details**.

DETAILS B.E. products perfectly **conform to our bath and wellness ecosystem**. You will be delighted by the **depth and breadth of the DETAILS B.E. product line**, so that our customers are spoilt for choice.

Here on we take care of the details, so you can JUST BE.

Abhinav Khandelwal



ABHINAV KHANDELWAL
FOUNDER,
DETAILS
— BE —

BRAND STORY

IT WAS OUR DREAM TO CREATE A BRAND THAT WAS ENTIRELY FUNCTIONAL ART — WHERE EACH PRODUCT STOOD OUT AT FIRST SIGHT!

MANY YEARS OF WORK LATER, OUR DREAM MANIFESTED IN **DETAILS B.E.** — A LINE OF GLOBALLY DESIGNED AND MANUFACTURED PRODUCTS IN COLOURS AND DETAILS THAT HAVE NOT BEEN SEEN BEFORE ON OUR SHORES.

DETAILS B.E. IS ACCESSIBLE LUXURY. WE HAVE CREATED A NEW MARKET SEGMENT BETWEEN HIGH-END LUXURY AND HIGH STREET. THE RESULT – MORE CHOICES, MORE BEAUTY AND CUSTOMER DELIGHT! EVERY DETAILS B.E. PRODUCT IS BUILT TO LAST AND PERFECTLY SUITS OUR ECOSYSTEM.

DETAILS B.E. CONFORMS TO THE FCML PROMISE OF QUALITY, AESTHETICS AND RELENTLESS AFTER-SALES SERVICE.

HERE ON, WE TAKE CARE OF THE DETAILS SO YOU CAN **JUST BE.**

BATHTUBS



LUMEN 6



VERVE 10



ORBIT 14



CASCADE 18



SILHOUETTE 22



CONQUER 26



PRELUDE 30

TECHNICAL DRAWINGS 34

LUMEN



LUMEN

The **LUMEN** bathtub by Details B.E. is a masterclass in modern luxury, designed to rejuvenate the senses. Featuring a dual-sided waterfall, advanced Chromotherapy lighting, water and air jet massages, and Bluetooth-enabled speakers, this whirlpool bath is an oasis of relaxation. Constructed with intelligent technology, it ensures seamless and safe operations.


HYDRO
MASSAGE
JETS


AIR
MASSAGE
SYSTEM


HEATING


CHROMO
THERAPY
LIGHTING


BLUETOOTH
CONNECTIVITY


DESIGNER
HEADSET



LUMEN 1850 X 1250 X 680 MM FCS/FBE/OYBRIO-03 ACRYLIC BATHTUB WHITE

CONSTRUCTION AND DIMENSIONS

- **PREMIUM MATERIAL:** BUILT WITH HIGH-QUALITY LUCITE ACRYLIC SUPPORTED BY A ROBUST STAINLESS-STEEL FRAME FOR ENHANCED DURABILITY.
- **GENEROUS SIZE:** DIMENSIONS OF 1850 X 1250 X 680 MM ENSURE AMPLE SPACE FOR RELAXATION.

HYDROTHERAPY AND PERFORMANCE

- **DUAL CASCADING WATERFALLS:** INTEGRATED LED-LIT WATERFALLS ON BOTH SIDES CREATE A LUXURIOUS CASCADING EFFECT.
- **HIGH-PERFORMANCE JETS:** 8 POWERFUL HYDRO MASSAGE JETS DRIVEN BY A 1.5 HP WHIRLPOOL MOTOR FOR TARGETED WATER THERAPY.
- **AIR MASSAGE SYSTEM:** A 300 W AIR PUMP WITH PRECISION MICRO-HOLE JETS PROVIDES A SOOTHING, INVIGORATING EXPERIENCE.
- **OPTIONAL HEATING:** A 3 KW INLINE HEATER MAINTAINS CONSISTENT WATER TEMPERATURE FOR EXTENDED COMFORT.

ADVANCED FEATURES

- **CHROMOTHERAPY LIGHTING:** SIX CUSTOMIZABLE COLOR OPTIONS TO ENHANCE MOOD AND PROMOTE WELL-BEING.
- **SMART CONNECTIVITY:** BUILT-IN BLUETOOTH SPEAKERS FOR SEAMLESS AUDIO STREAMING.
- **INTUITIVE CONTROLS:** FEATHER-TOUCH ELECTRONIC PANEL FOR EFFORTLESS OPERATION.
- **POP-UP HAND SHOWER:** CONVENIENTLY INTEGRATED HAND SHOWER FOR ADDED FUNCTIONALITY.
- **AUTOMATIC DRAINAGE:** POP-UP WASTE SYSTEM WITH SINGLE-BUTTON ACTIVATION.
- **DUAL PUMP SYSTEM:** 2 HP PUMP FOR WATERFALL EFFECTS AND 1.5 HP PUMP FOR HYDRO MASSAGE OPERATION.
- **INTEGRATED FILLING:** INSTEAD OF A TRADITIONAL SPOUT, FILLING IS FROM A DISCRETE SLOT.

SAFETY FEATURES

- **DRY RUN PROTECTION:** ENSURES MOTOR SAFETY BY PREVENTING OPERATION WHEN WATER LEVELS ARE INSUFFICIENT.
- **WATER LEVEL MONITORING:** INTEGRATED SENSORS FOR OPTIMAL PERFORMANCE AND SYSTEM PROTECTION.
- **ELECTRICAL SAFETY:** EARTH LEAKAGE CIRCUIT BREAKER (ELCB) GUARDS AGAINST POWER SURGES AND ELECTRICAL FAULTS.

ADDITIONAL FUNCTIONALITIES

- **EFFICIENT OVERFLOW DRAINAGE:** MULTIPURPOSE OVERFLOW SYSTEM FOR EFFECTIVE WATER MANAGEMENT.





VERVE

The **VERVE** bathtub by Details B.E. delivers technologically-driven advanced functionality—the ultimate space of relaxation. It is built for comfort, designed for healing and used for relaxation. With a rectangular lounger, dual headrests, chromotherapy lighting, hydro and air jet massage systems, with an integrated waterfall, the Verve bathtub makes bathing a luxurious retreat.





VERVE 1850 X 1500 X 640 MM FCS/FBE/OYBRIO-04 ACRYLIC BATHTUB WHITE



DESIGN AND CONSTRUCTION

- **MATERIAL:** CRAFTED FROM HIGH-QUALITY ACRYLIC WITH A DURABLE STAINLESS-STEEL FRAME FOR LASTING SUPPORT.
- **DIMENSIONS:** SPACIOUS DESIGN WITH MEASUREMENTS OF 1850 X 1500 X 640 MM.

HYDROTHERAPY AND COMFORT

- **HYDRO MASSAGE JETS:** EQUIPPED WITH 8 POWERFUL JETS POWERED BY A 2 HP PUMP FOR A REJUVENATING WATER MASSAGE.
- **AIR MASSAGE SYSTEM:** 300 W AIR PUMP DRIVING 10 AIR JETS FOR A GENTLE, RELAXING EXPERIENCE.
- **CHROMOTHERAPY LIGHTING:** INTEGRATED MULTI-COLOR LED LIGHTS TO CREATE A SOOTHING AMBIANCE AND PROMOTE WELL-BEING.
- **WATERFALL FEATURE:** STYLISH WATERFALL WITH BUILT-IN LIGHTING TO ENHANCE THE BATHING EXPERIENCE.

COMFORT ENHANCEMENTS

- **LOUNGER PILLOW:** ONE ERGONOMIC PILLOW FOR RECLINING COMFORT.
- **DUAL HEADRESTS:** TWO CUSHIONED HEADRESTS FOR ADDED RELAXATION SUPPORT.

FUNCTIONAL ADD-ONS

- **ADVANCED CONTROLS:** ELECTRONIC TOUCHPAD CONTROL PANEL OFFERING FEATHER-TOUCH OPERATION OF ALL FUNCTIONS.
- **DIVERTER AND MIXER:** INCLUDES A DIVERTER AND MIXER WITH AN INTEGRATED POP-UP HAND SHOWER FOR VERSATILITY.
- **EFFORTLESS DRAINAGE:** AUTOMATIC POP-UP WASTE SYSTEM FOR CONVENIENT WATER DISPOSAL.
- **INTEGRATED FILLING:** INSTEAD OF A TRADITIONAL SPOUT, FILLING IS FROM A DISCRETE SLOT.

SAFETY FEATURES

- **DRY BURN PROTECTION:** SAFEGUARDS AGAINST MOTOR DAMAGE BY PREVENTING OPERATION WHEN WATER LEVELS ARE INSUFFICIENT.
- **WATER LEVEL SENSOR:** MONITORS WATER LEVELS TO ENSURE OPTIMAL PERFORMANCE AND SYSTEM LONGEVITY.
- **ELECTRICAL SAFETY:** EQUIPPED WITH AN EARTH LEAKAGE CIRCUIT BREAKER (ELCB) TO PREVENT ELECTRICAL HAZARDS.

ORBIT



ORBIT

The **ORBIT** bathtub by Details B.E. is a beauty to behold with its circular design and four backrests that redefine luxury. Equipped with advanced features like chromotherapy lighting, hydro and air jet massage systems, and Bluetooth-enabled audio, the Orbit unknots the muscles and eases the mind. Its advanced safety measures ensure a seamless and secure experience.


HYDRO
MASSAGE
JETS


AIR
MASSAGE
SYSTEM


HEATING


CHROMO
THERAPY
LIGHTING


BLUETOOTH
CONNECTIVITY


DESIGNER
HEADSET



ORBIT 1820 X 850 MM FCS/FBE/OYHEBE ACRYLIC BATHTUB WHITE



DESIGN AND CONSTRUCTION

- **MATERIAL:** HIGH-QUALITY ACRYLIC SUPPORTED BY A DURABLE STAINLESS-STEEL FRAME.
- **DIMENSIONS:** SPACIOUS DESIGN WITH A SIZE OF 1820 X 850 MM.
- **CAPACITY:** COMFORTABLY ACCOMMODATES UP TO FOUR INDIVIDUALS.

HYDROTHERAPY AND RELAXATION

- **HYDRO MASSAGE JETS:** 6 HIGH-PERFORMANCE JETS POWERED BY A 1250 W MOTOR FOR A SOOTHING MASSAGE EXPERIENCE.
- **AIR MASSAGE SYSTEM:** 15 ULTRA-SLIM AIR JETS OPERATED BY A 600 W MOTOR WITH A SILENCER FOR WHISPER-QUIET RELAXATION.
- **DESIGNER HEADRESTS:** FOUR ERGONOMIC HEADRESTS PROVIDE EXCEPTIONAL COMFORT DURING USE.
- **CHROMOTHERAPY LIGHTING:** BUILT-IN LED LIGHTING WITH MULTIPLE COLOR OPTIONS TO ENHANCE MOOD AND PROMOTE WELL-BEING.

ADDITIONAL FEATURES

- **OZONIZER:** ENSURES A CLEAN AND HYGIENIC BATHING ENVIRONMENT BY ELIMINATING IMPURITIES.
- **INTEGRATED AUDIO SYSTEM:** BUILT-IN FM RADIO AND BLUETOOTH CONNECTIVITY FOR A PREMIUM AUDIO EXPERIENCE.
- **OPTIONAL BATH FILLER SET:** ELEGANT AND FUNCTIONAL BATH FILLER SET AVAILABLE AS AN OPTIONAL ADD-ON.
- **AUTOMATIC DRAINAGE:** EFFICIENT POP-UP WASTE SYSTEM FOR HASSLE-FREE WATER DISPOSAL.
- **OPTIONAL HEATING:** 3 KW INLINE HEATER MAINTAINS A CONSISTENT WATER TEMPERATURE FOR PROLONGED COMFORT.

CONTROL AND EASE OF USE

- **ELECTRONIC TOUCH PANEL:** INTUITIVE FEATHER-TOUCH CONTROLS FOR EFFORTLESS OPERATION OF ALL FUNCTIONS.

SAFETY FEATURES

- **DRY BURN PROTECTION:** PREVENTS MOTOR DAMAGE BY ENSURING OPERATION ONLY WHEN SUFFICIENT WATER LEVELS ARE PRESENT.
- **WATER LEVEL SENSOR:** CONTINUOUSLY MONITORS WATER LEVELS TO GUARANTEE SAFE AND OPTIMAL PERFORMANCE.
- **ELECTRICAL SAFETY:** EQUIPPED WITH AN EARTH LEAKAGE CIRCUIT BREAKER (ELCB) FOR PROTECTION AGAINST ELECTRICAL HAZARDS.

CASCADE



CASCADE

The **CASCADE** bathtub by Details B.E. is a premium choice for those who prioritise wellness and health. Designed for two, with ergonomic headrests and the flexibility of left or right-hand models, it offers the perfect blend of innovation and indulgence. Its combination of hydro and air massage systems, coupled with Chromotherapy lighting, creates a serene escape where every detail is crafted for your safety, comfort and rejuvenation.


HYDRO
MASSAGE
JETS


AIR
MASSAGE
SYSTEM


HEATING


CHROMO
THERAPY
LIGHTING


BLUETOOTH
CONNECTIVITY


DESIGNER
HEADSET



CASCADE 1830 X 1220 X 630 MM FCS/FBE/OYBRIO-05 ACRYLIC BATHTUB WHITE

DESIGN AND CONSTRUCTION

- **MATERIAL:** PREMIUM ACRYLIC PAIRED WITH A ROBUST STAINLESS-STEEL FRAME FOR EXCEPTIONAL DURABILITY AND MODERN ELEGANCE.
- **DIMENSIONS:** GENEROUS SIZE OF 1830 X 1220 X 630 MM, PROVIDING AMPLE SPACE FOR RELAXATION.

HYDROTHERAPY AND RELAXATION

- **HYDRO MASSAGE JETS:** 8 HIGH-EFFICIENCY JETS POWERED BY A 1250 W MOTOR FOR AN INVIGORATING MASSAGE EXPERIENCE.
- **AIR MASSAGE SYSTEM:** 10 AIR JETS DRIVEN BY A 600 W MOTOR WITH A SILENCER, ENSURING A GENTLE AND WHISPER-QUIET OPERATION.
- **ERGONOMIC HEADRESTS:** TWO COMFORTABLE HEADRESTS TAILORED FOR PERSONALIZED SUPPORT AND RELAXATION.
- **CHROMOTHERAPY LIGHTING:** MULTI-COLORED LED LIGHTS DESIGNED TO CREATE A CALMING, THERAPEUTIC AMBIANCE.

FLEXIBILITY AND FUNCTIONALITY

- **MODEL OPTIONS:** AVAILABLE IN LEFT-HAND SIDE (LHS) AND RIGHT-HAND SIDE (RHS) CONFIGURATIONS TO SUIT DIVERSE BATHROOM LAYOUTS.
- **OPTIONAL HEATER:** 3 KW ONLINE HEATER ENSURES CONSISTENT WATER TEMPERATURE FOR AN EXTENDED, LUXURIOUS SOAK.
- **OPTIONAL BATH FILLER SET:** ELEGANT AND FUNCTIONAL BATH FILLER SET AVAILABLE AS AN OPTIONAL ADD-ON.
- **EFFORTLESS DRAINAGE:** AUTOMATIC POP-UP WASTE SYSTEM ENSURES QUICK AND EFFICIENT WATER DISPOSAL.
- **CONTROL:** ELECTRONIC CONTROL PANEL FOR SEAMLESS OPERATION OF LIGHTING, MASSAGE JETS, AND OTHER FEATURES.

SAFETY FEATURES

- **DRY BURN PROTECTION:** PREVENTS MOTOR DAMAGE BY ENSURING SAFE OPERATION ONLY WHEN SUFFICIENT WATER LEVELS ARE PRESENT.
- **WATER LEVEL SENSOR:** ACCURATELY MONITORS WATER LEVELS FOR OPTIMAL PERFORMANCE AND SAFETY.
- **EARTH LEAKAGE CIRCUIT BREAKER (ELCB):** ADVANCED ELECTRICAL SAFETY MECHANISM TO PROTECT AGAINST FLUCTUATIONS AND HAZARDS.





SILHOUETTE

SILHOUETTE by Details B.E. is a sanctuary of refined luxury. Its freestanding design offers comfort, elegance, and functionality, transforming every soak into a restorative ritual—perfect for unwinding or energising, tailored for those who value wellness and balance.



SILHOUETTE 1805 X 905 X 610 MM FCS/FBE/OYBRIO-06 ACRYLIC BATHTUB WHITE



DESIGN AND CONSTRUCTION

- **MATERIAL:** CRAFTED FROM HIGH-QUALITY ACRYLIC WITH A SMOOTH, ELEGANT FINISH, COMBINING DURABILITY AND AESTHETICS.
- **DIMENSIONS:** SPACIOUS DESIGN MEASURING 1805 X 905 X 610 MM, OFFERING AMPLE ROOM FOR COMFORT.
- **TIMELESS STYLE:** MINIMALIST AND SLEEK SILHOUETTE COMPLEMENTS MODERN AND CONTEMPORARY BATHROOM DESIGNS.

FUNCTIONALITY

- **EFFORTLESS DRAINAGE:** EQUIPPED WITH AN AUTOMATIC POP-UP WASTE SYSTEM FOR CONVENIENT AND SEAMLESS WATER DISPOSAL.

ADD -ONS

- ADDITIONAL WHIRLPOOL IS AVAILABLE.
- AVAILABLE AS DROP IN VERSION WITH WHIRLPOOL JET ON REQUEST.

CONQUER



CONQUER

CONQUER by Details B.E. is a refined symbol of wellness, crafted to bring luxurious wellbeing into your bathroom. A welcoming retreat that inspires you to conquer the day with renewed vigour every day. Its serene freestanding design and compact proportions make it the perfect addition to modern spaces.



CONQUER 1995 X 1000 X 535 MM FCS/FBE/OYBRIO ACRYLIC BATHTUB WHITE



DESIGN AND CONSTRUCTION

- **MATERIAL:** HIGH-QUALITY ACRYLIC WITH A SLEEK, SMOOTH FINISH FOR A REFINED AND DURABLE DESIGN.
- **DIMENSIONS:** COMPACT SIZE OF 1995 X 1000 X 535 MM, IDEAL FOR SMALLER SPACES WITHOUT COMPROMISING ON ELEGANCE.
- **SOPHISTICATED STYLE:** A TIMELESS AND MINIMALIST SILHOUETTE ENHANCES THE AESTHETICS OF MODERN AND CONTEMPORARY BATHROOMS.

CONVENIENCE

- **EFFORTLESS DRAINAGE:** FEATURES AN AUTOMATIC POP-UP WASTE SYSTEM FOR SEAMLESS AND HASSLE-FREE WATER DISPOSAL.



PRELUDE

PRELUDE

PRELUDE by Details B.E. captures the rhythm of modern living, offering a freestanding design that offers relaxation and rejuvenation, at the start of the day. Its sleek form and efficient functionality make it an essential centrepiece for contemporary bathrooms, where every soak is a moment to revitalise and energise. It's the perfect prelude to a day.



PRELUDE 1650 X 700 X 600 MM FCS/FBE/OYBRIO ACRYLIC BATHTUB WHITE



DESIGN AND CONSTRUCTION

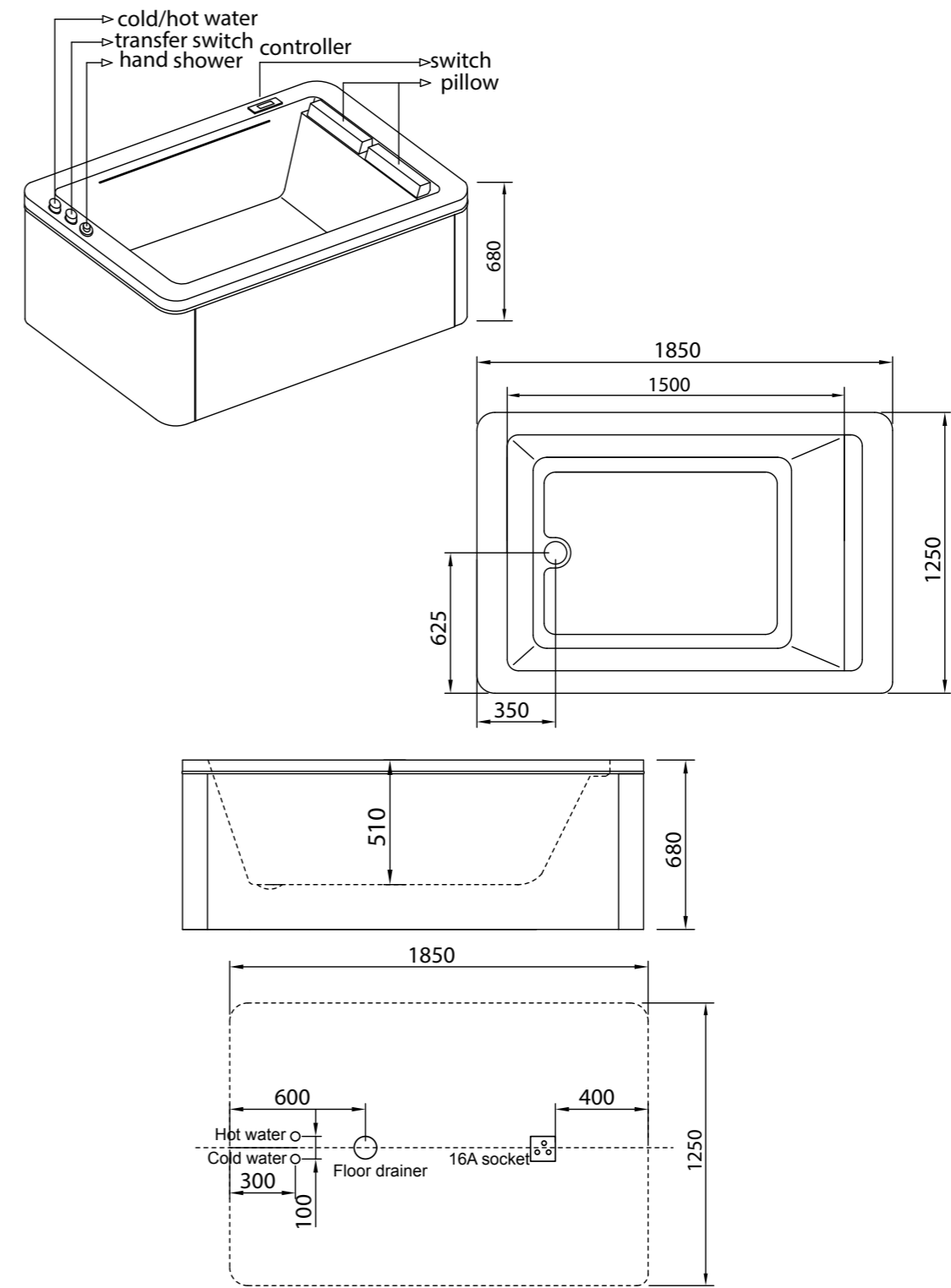
- **MATERIAL:** PREMIUM ACRYLIC WITH A SMOOTH, POLISHED FINISH FOR A SOPHISTICATED AND DURABLE APPEARANCE.
- **DIMENSIONS:** SPACE-EFFICIENT DESIGN MEASURING 1650 X 700 X 600 MM, IDEAL FOR MODERN BATHROOMS.
- **ELEGANT STYLE:** STREAMLINED AND COMPACT, THIS BATHTUB ADDS A TOUCH OF REFINEMENT TO CONTEMPORARY SPACES.

CONVENIENCE

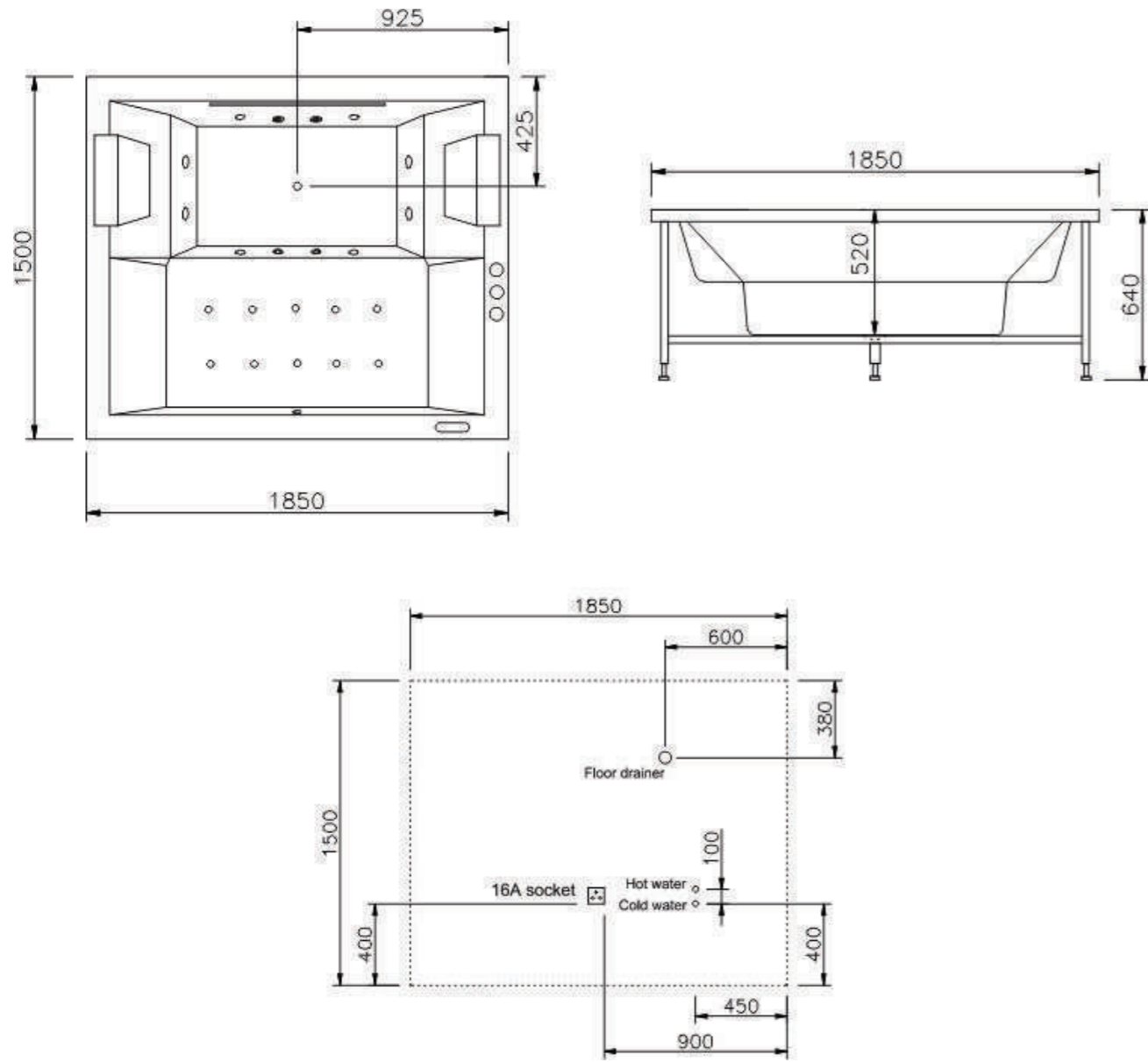
- **AUTOMATIC DRAINAGE:** FITTED WITH AN AUTOMATIC POP-UP WASTE SYSTEM FOR EFFORTLESS AND EFFICIENT WATER DISPOSAL.



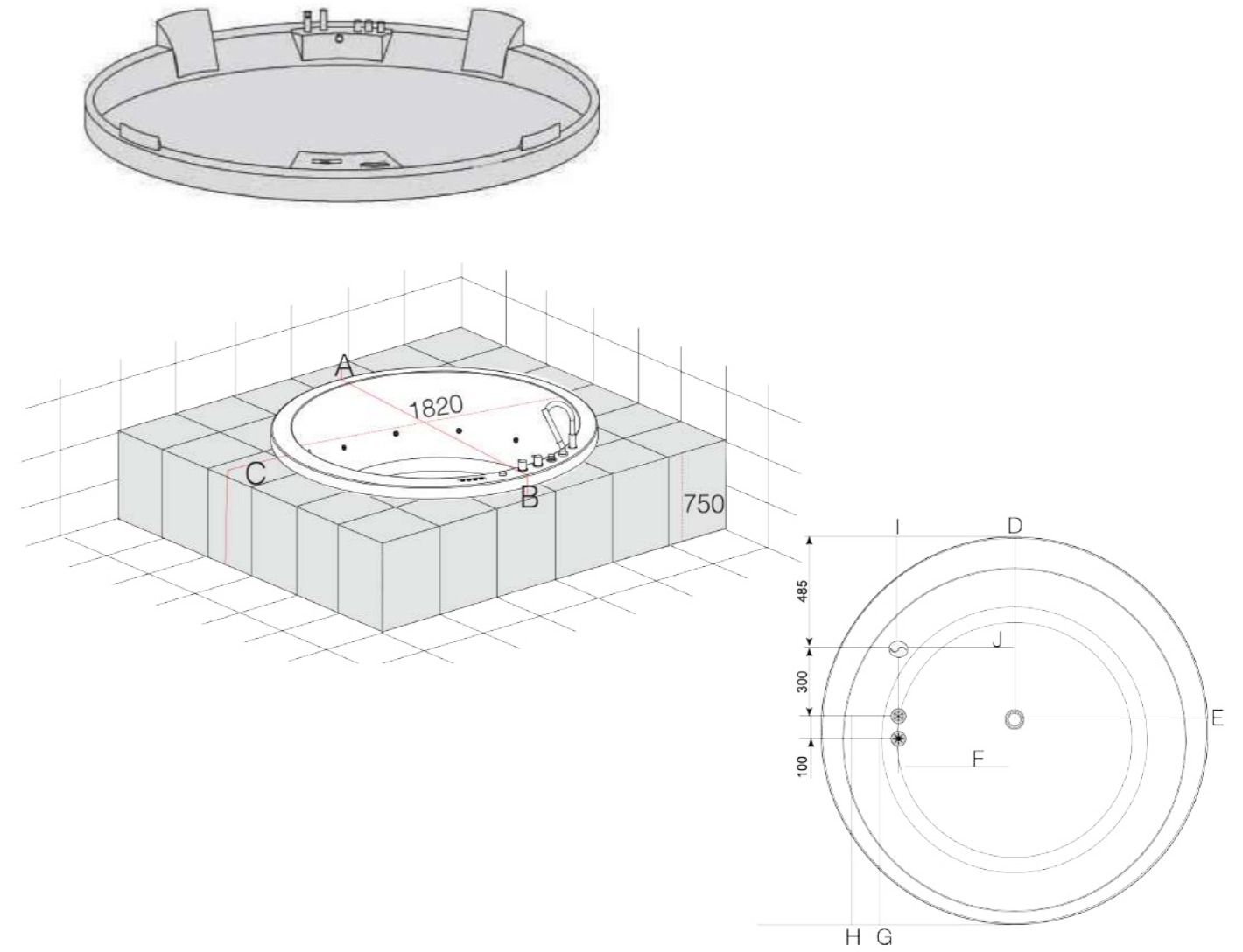
TECHNICAL DRAWINGS



LUMEN 1850 X 1250 X 680 MM



VERVE 1850 X 1500 X 640 MM

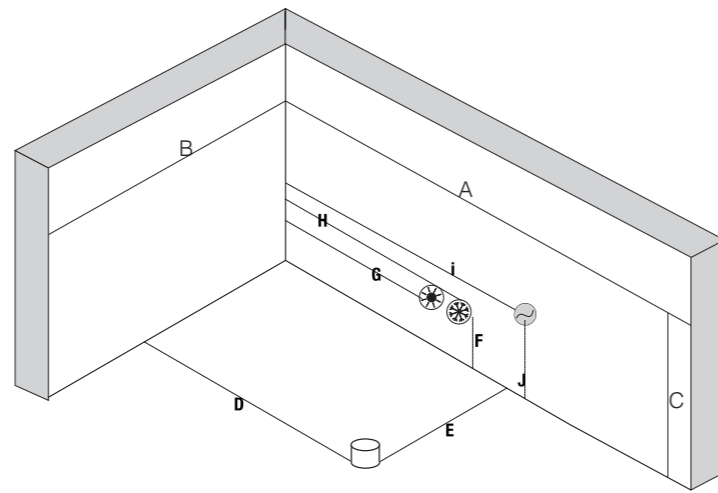
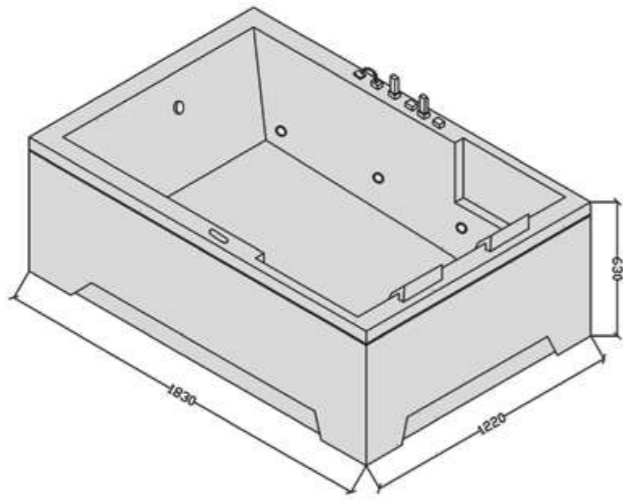


| | | | | | | | | | | |
|-----------|------|------|-----|-----|-----|-----|-----|------|-----|-----|
| Size : | A | B | C | D | E | F | G | H | I | J |
| DIMENSION | 1820 | 1820 | 850 | 750 | 900 | 300 | 900 | 1050 | 950 | 450 |





Location of drain

Location of cold and hot water connections

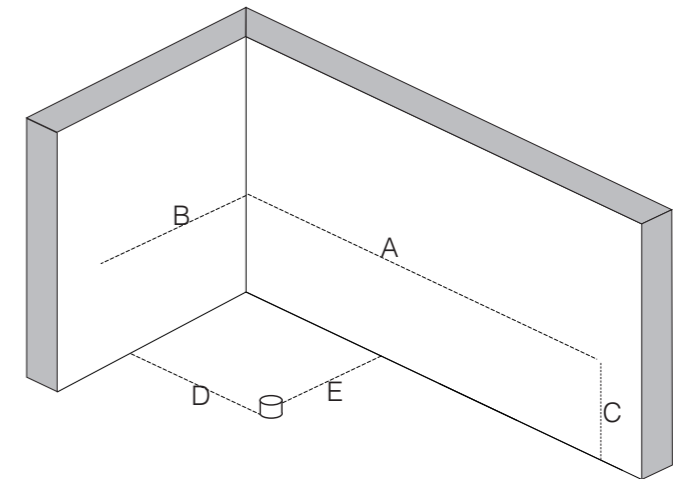
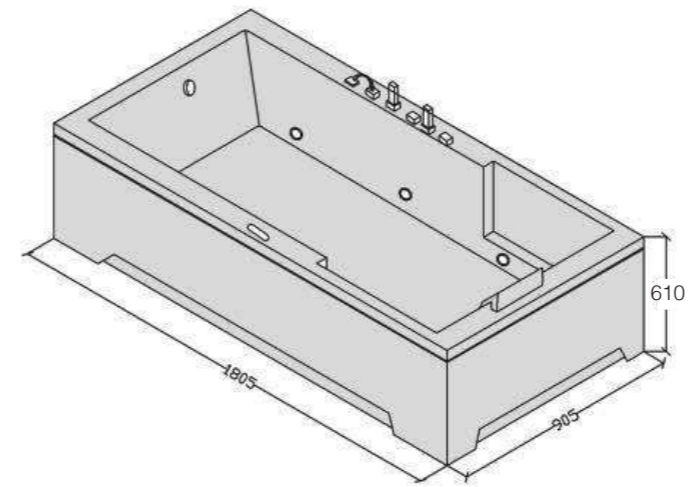
ORBIT 1820 X 850 MM



| | | | | | | | | | | |
|-----------|------|------|-----|-----|-----|-----|-----|------|-----|-----|
| Size: | A | B | C | D | E | F | G | H | I | J |
| DIMENSION | 1830 | 1220 | 630 | 900 | 600 | 200 | 900 | 1050 | 750 | 250 |

Location of drain 
 Location of cold and hot water connections  
 Location of electrical connections 

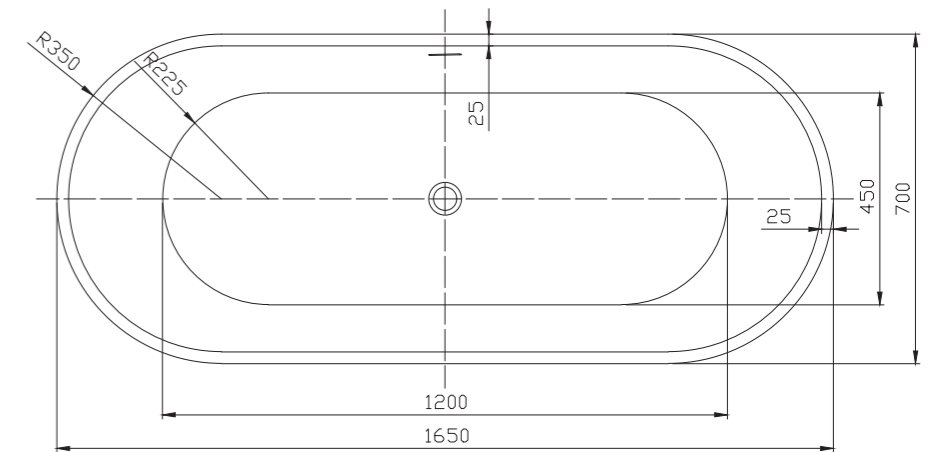
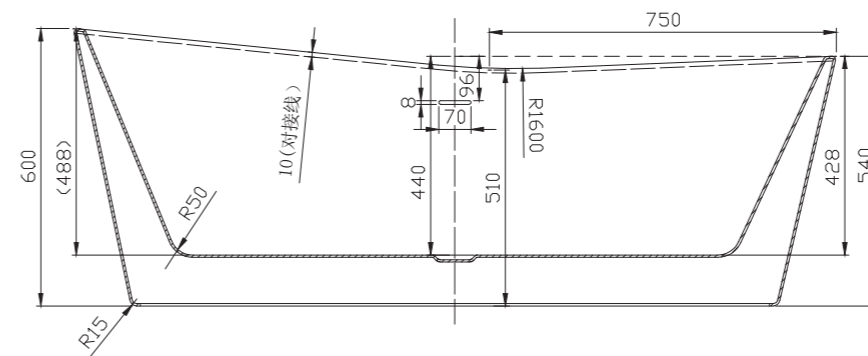
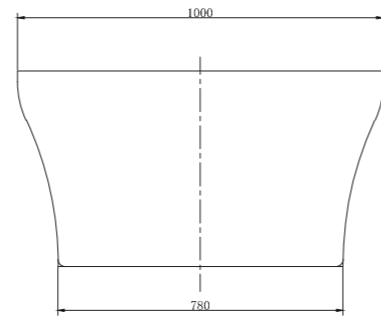
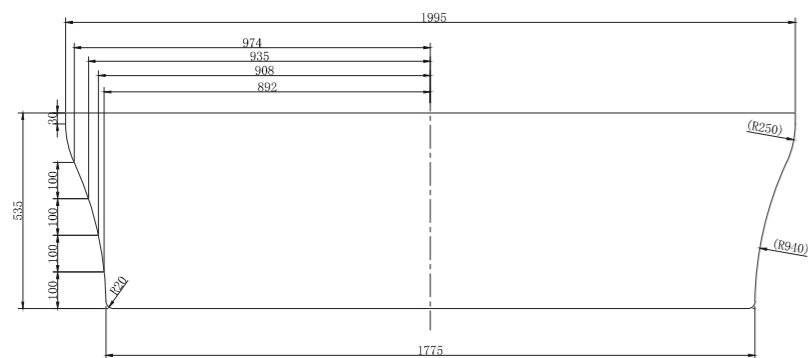
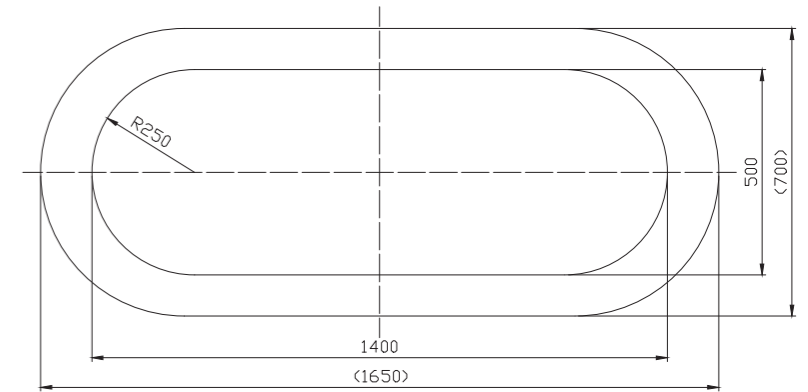
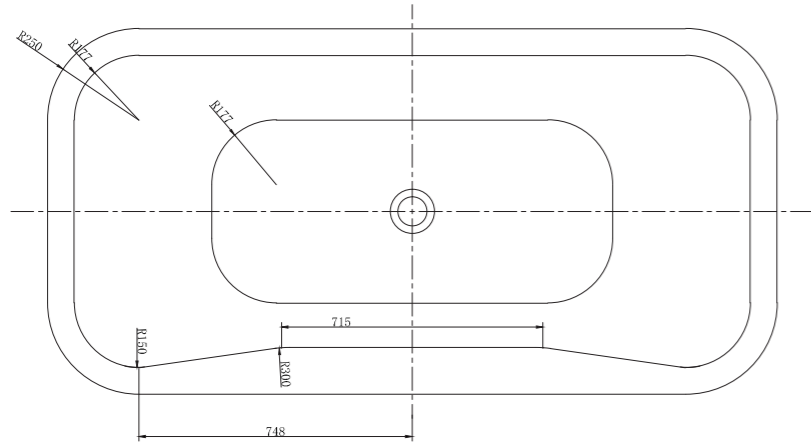
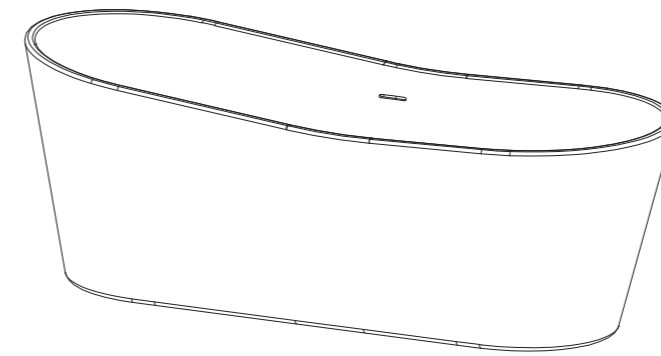
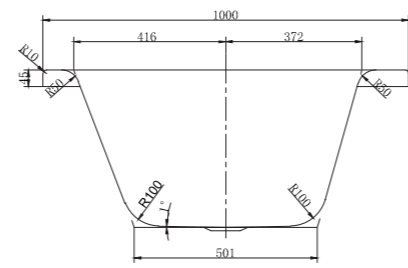
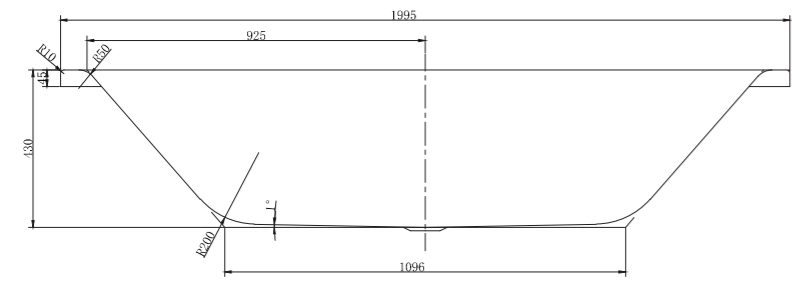
CASCADE 1830 X 1220 X 630 MM



| | | | | | |
|-----------|------|-----|-----|-----|-----|
| Size: | A | B | C | D | E |
| DIMENSION | 1805 | 905 | 610 | 400 | 350 |

Location of drain 

SILHOUETTE 1805 X 905 X 610 MM



CONQUER 1995 X 1000 X 535 MM

PRELUDE 1650 X 700 X 600 MM



DETAILS — BE —

BATHROOM ACCESSORIES | BATHWARE | STEAM GENERATORS